

PROMOTING EMPLOYMENT ACROSS KANSAS

2022 ANNUAL REPORT

JANUARY 2023



JOHNSON COUNTY



PROMOTING EMPLOYMENT ACROSS KANSAS (PEAK)

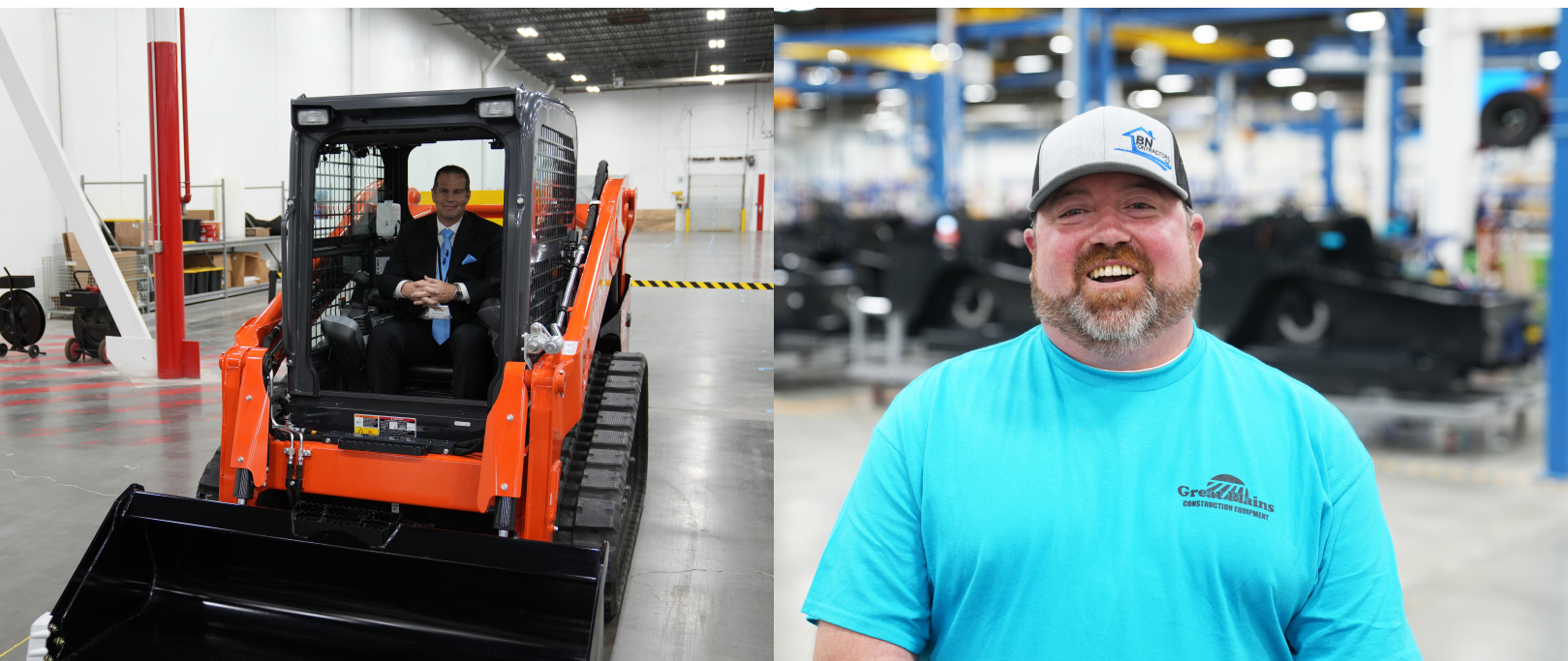
The Promoting Employment Across Kansas program, known as PEAK, is designed to help recruit companies and jobs to Kansas by allowing them to retain up to 95% of the withholding taxes generated by new employees. This is the main incentive the state offers in business recruitment and is a vital tool to the Department. It is important to note that as of June 30, 2018, PEAK can no longer be used to retain jobs in Kansas.

The PEAK benefit and term are based on the number of PEAK jobs/employees to be hired, their wage levels, and other economic impact variables of a project. During the benefit term, participating PEAK companies may retain or be refunded 95% of the state withholding tax of PEAK-eligible employees that are paid at or above the county median wage where the PEAK business facility is or will be located. Qualified companies must create within a two-year period and maintain thereafter, a minimum of five new PEAK jobs in non-metropolitan counties or 10 new PEAK jobs in the metropolitan counties of Shawnee, Douglas, Wyandotte, Johnson, Leavenworth and Sedgwick to receive "Basic" program benefits.

Qualified companies must create within a two-year period and maintain thereafter, a minimum of 100 new PEAK jobs regardless of location to receive "High Impact" program benefits. Aggregate wages of the PEAK jobs must meet or exceed the county median wage or North American Industry Classification System (NAICS) average wage for their industry. Applicants meeting program requirements may include for-profit companies and not-for-profit headquarters.

Qualified applicants also must:

1. Offer an adequate health insurance policy to its full-time employees within 180 days of hire that provides coverage for basic hospital and procedures care, physician care, mental health care, substance abuse treatment, prenatal and postnatal care and prescription drugs, and pay at least 50% of the employee's health insurance premium cost.
2. Not owe undisputed federal, state or local taxes.
3. Not be under or intend to seek protection under the federal bankruptcy code.



PEAK OVERVIEW: FISCAL YEAR 2022

During FY2022, 43 new agreements were signed, projecting the creation of 4,502 PEAK jobs, with a direct annual payroll of \$320 million and \$508.6 million in capital investment expenditures.

A total of 233 active PEAK projects were required to submit quarterly reports. Of the 233, nine companies terminated their agreement during the period. The remaining 224 active agreements projected the hiring or retention of 36,138 PEAK jobs, with an estimated \$2.4 billion in direct annual payroll and \$6.2 billion in capital investment expenditures.

COMPANIES REPORTED THE FOLLOWING RESULTS:

- 17,592 PEAK jobs were created with an average hourly wage of \$47.42.
- \$1.5 billion in total payroll generated \$68.8 million in Kansas Individual Income Tax Withholding.
- Companies retained \$46 million, or 67%, of the withholding from PEAK employees that received wages at or above the county wage standard (known as PEAK-Eligible Employees).
- \$22.6 million, or 33% of the withholding was remitted to Kansas as the required 5 percent for PEAK Eligible Employees and for PEAK Employees whose individual wages did not meet the county wage standard.
- Using industry-specific multipliers, 19,804 indirect jobs and \$950.8 million of indirect earnings are estimated to have resulted from the PEAK Jobs and wages reported in FY 2022. (Source: KU Institute for Policy & Social Research)
- The return on investment (ROI) on the \$46 million withholding retained by PEAK participant companies in FY 2022 is estimated to be over \$2.6 billion*, including over \$202.4 million** in state and local tax revenue, and over \$44.1 billion*** in growth to the Kansas economy.

* \$1 PEAK Investment = \$57 Total ROI (Source: Legislative Post Audit Report R-14-011 December 2014)

** \$1 PEAK Investment = \$4.40 ROI in State & Local Tax Revenue (Source: Legislative Post Audit Report R-14-011 December 2014)

*** \$1 PEAK Investment = \$960 ROI in Kansas Economy Growth (Source: Docking Institute of Public Affairs PEAK Program Evaluation & Economic Impact Analysis August 2013)

43

NEW AGREEMENTS

4,502

PROJECTED PEAK
JOBS CREATED

\$320M

DIRECT ANNUAL
PAYROLL

\$508.6M

CAPITAL INVESTMENT
EXPENDITURES

2022 PEAK AGREEMENTS

The table on pages 4-16 lists all active, completed and terminated agreements (due to not meeting program requirements) in FY 2022. An asterisk (*) indicates that the agreement was signed in 2022.

COMPANY NAME	AGREEMENT TYPE	STATUS	COUNTY	NAICS INDUSTRY
A Place for Mom, Inc.	New Location-OOS Expansion	Active	Johnson	Other Individual and Family Services
Ad Astra Information Systems, LLC	Existing Expansion	Active	Johnson	Software Publishers
Advisors Excel Holdings, LLC	Existing Expansion	Active	Shawnee	Other Financial Investment Activities
AE Wealth Management, LLC	New Location-Start Up	Active	Shawnee	Investment Advice
AE Wealth Management, LLC	Existing Expansion*	Active	Shawnee	Investment Advice
Aetna, Inc.	Relocation	Active	Johnson	Offices of Other Holding Companies
AG613, LLC	Relocation	Active	Johnson	Nonresidential Property Managers
Alarm.com Incorporated	Existing Expansion	Active	Douglas	Data Processing, Hosting, and Retained Services
Allied National Inc.	Existing Expansion	Active	Johnson	Office Administrative Services
Alltite, Inc.	Existing Expansion	Active	Sedgwick	Commercial and Industry Machinery and Equipment (except Automotive and Electronic) Repair and Maintenance
Amazon.com Services, Inc.	New Location -OOS Expansion	Active	Johnson	General Warehousing and Storage
Amazon.com Services, Inc.	New Location-OOS Expansion	Active	Wyandotte	General Warehousing and Storage
American Multi-Cinema, Inc.	Relocation	Active	Johnson	Corporate, Subsidiary, and Regional Managing Offices
American Multi-Cinema, Inc.	Relocation	Active	Johnson	Corporate, Subsidiary, and Regional Managing Offices
AmeriLifeGroup, LLC	Relocation	Active	Johnson	All Other Insurance Related Activities
ANGI Homeservices, Inc.	Existing Expansion	Terminated	Johnson	Internet Publishing and Broadcasting and Web Search Portals
Applequist Manufacturing, Inc.	New Location-Start Up	Active	Smith	All Other Miscellaneous Fabricated Metal Product Manufacturing

2022 PEAK AGREEMENTS

COMPANY NAME	AGREEMENT TYPE	STATUS	COUNTY	NAICS INDUSTRY
Aratana Therapeutics, Inc.	Existing Expansion	Active	Johnson	Pharmaceutical Preparation Manufacturing
Ascend Learning, LLC	Existing Expansion	Active	Johnson	Educational Support Services
Atlas Aerospace, LLC	Existing Expansion	Active	Sedgwick	Other Aircraft Parts and Auxiliary Equipment Manufacturing
Attentive Science, LLC	New Location-Start Up	Active	Johnson	Research and Development in Biotechnology
Azurity Pharmaceuticals, Inc.	Existing Expansion*	Active	Johnson	Research and Development in the Physical
B&W Custom Truck Beds, Inc.	Existing Expansion	Active	Allen	Other Motor Vehicle Parts Manufacturing
B/E Aerospace, Inc.	Relocation	Active	Johnson	Other Aircraft Parts and Auxiliary Equipment Manufacturing
Barrier Compliance Services, LLC	Existing Expansion	Completed	Johnson	Drywall and Insulation Contractors
BASYS Processing, Inc.	Existing Expansion	Active	Johnson	Financial Transactions Processing, Reserve, and Clearinghouse Activities
BATS Global Markets Holding, Inc.	Existing Expansion	Completed	Johnson	Securities and Commodities Exchange
BATS Global Markets Holding, Inc.	Existing Expansion	Active	Johnson	Financial Transactions Processing, Reserve, and Clearinghouse Activities
Berkley Insurance Company	New Location-Start Up	Active	Johnson	All Other Insurance Related Activities
Bettis Contractors, Inc.	Existing Expansion	Active	Shawnee	Fabricated Structural Metal Manufacturing
Beyond Warehousing	Existing Expansion	Active	Johnson	Warehousing and Storage
BiominAmerica, Inc.	New Location-OOS Expansion	Active	Johnson	Wholesale Trade Agents and Brokers
Brek Manufacturing Company	New Location-OOS Expansion*	Active	Sedgwick	Machine Shops
Broderson Manufacturing Corporation	Existing Expansion	Active	Johnson	Construction Machinery Manufacturing
Buechel Stone Corporation	Existing Expansion	Active	Cowley	Cut Stone and Stone Product Manufacturing
C.D.L. Electric Company, Inc.	Existing Expansion	Active	Crawford	Support Activities for Rail Transportation

2022 PEAK AGREEMENTS

COMPANY NAME	AGREEMENT TYPE	STATUS	COUNTY	NAICS INDUSTRY
CamsoManufacturing USA, Ltd.	New Location-Start Up	Active	Geary	All Other Rubber Product Manufacturing
CamsoManufacturing USA, Ltd.	Existing Location	Active	Lyon	All Other Rubber Product Manufacturing
Canopy, A Public Benefit, LLC	Existing Expansion*	Active	Riley	Custom Computer Programing Services
Capital Electric Construction Company, Inc.	Relocation	Active	Wyandotte	Current-Carrying Wiring Device Manufacturing
Card Compliant, LLC	Relocation	Active	Johnson	Other Computer Related Services
Cargill, Inc.	Retention	Active	Sedgwick	Flour Milling
CarMax Auto Superstores, Inc.	New Location –Start Up	Active	Johnson	Telemarketing Bureaus and Other Contact Centers
Carter-Waters, LLC	Relocation	Active	Johnson	Corporate, Subsidiary, and Regional Managing Offices,
Caterpillar Work Tools, Inc.	Existing Expansion	Terminated	Pottawatomie	Construction Machinery Manufacturing
Ceva U.S. Holdings, Inc.	Existing Expansion	Active	Johnson	Biological Product (except Diagnostic) Manufacturing
Churchill Container LLC	New Location –Start Up	Active	Johnson	All Other Plastics Product Manufacturing
Cimarron Trailers K, LLC	New Location-OOS Expansion*	Active	Pottawatomie	Truck Trailer Manufacturing
City Wide Franchise Company, Inc	Existing Expansion	Active	Johnson	Lessors of Nonfinancial Intangible Assets (except Copyrighted Works)
CivicPlus, LLC	Existing Expansion	Active	Riley	Data Processing, Hosting, and Related Services
Clemens Aviation, LLC	Existing Expansion	Active	Sedgwick	Other Airport Operations
CNH Industrial America, LLC	Existing Expansion*	Active	Sedgwick	Construction Machinery Manufacturing
Cobalt Iron, Inc.	Existing Expansion	Active	Douglas	Computer Systems Design Services
ColdPoint Logistics Warehouse, LLC	Existing Expansion	Active	Johnson	Refrigerated Warehousing and Storage
Companion Protect, LLC	Existing Expansion	Active	Johnson	Other Direct Insurance (except Life, Health, and Medical) Carriers
Compass Minerals America, Inc.	Existing Expansion	Terminated	Johnson	Spice and Extract Manufacturing

2022 PEAK AGREEMENTS

COMPANY NAME	AGREEMENT TYPE	STATUS	COUNTY	NAICS INDUSTRY
Concordia Technologies, LLC	Existing Expansion	Active	Cloud	All Other Miscellaneous Fabricated Metal Product Manufacturing
Concordia Technologies, LLC	New Location–Start Up	Active	Cloud	All Other Miscellaneous Fabricated Metal Product Manufacturing
Creative Planning, Inc.	Existing Expansion	Active	Johnson	Other Financial Investment Activities
CrossFirst Bank	Existing Expansion	Active	Johnson	Commercial Banking
CZ-USA	Existing Expansion	Completed	Wyandotte	Small Arms, Ordnance, and Ordnance Accessories Manufacturing
D.H. Pace Company, Inc.	Relocation	Active	Johnson	Other Building Equipment Contractors
D.H. Pace Company, Inc.	Existing Expansion	Active	Johnson	Other Building Equipment Contractors
D.H. Pace Company, Inc	Existing Expansion	Active	Johnson	Other Building Equipment Contractors
Dairy Farmers of America, Inc.	Relocation	Active	Wyandotte	Corporate, Subsidiary, and Regional Managing Offices
Datafile Technologies, LLC	Relocation	Terminated	Johnson	Office Administrative Services
Deluxe Small Business Sales, Inc.	New Location-OOS Expansion	Active	Johnson	Administrative Management and General Management Consulting Services
Digital Evolution Group, LLC	Retention	Active	Johnson	Internet Publishing and Broadcasting and Web Search Portals
Digital Evolution Group, LLC	Existing Expansion	Active	Johnson	Internet Publishing and Broadcasting and Web Search Portals
Dimensional Innovations, Inc.	Existing Expansion	Active	Johnson	Custom Architectural Woodwork and Millwork Manufacturing
Dold Foods, LLC	Existing Expansion*	Active	Sedgwick	Meat Processed from Carcasses
DSI Holdings Corporation	Relocation	Active	Johnson	Corporate, Subsidiary, and Regional Managing Offices
Dynamic Logistix LLC	Existing Expansion	Active	Johnson	Freight Transportation Arrangement
Dynamic N/C, LLC	Existing Expansion*	Active	Butler	Other Aircraft Parts and Auxillary Equipment Manufacturing

2022 PEAK AGREEMENTS

COMPANY NAME	AGREEMENT TYPE	STATUS	COUNTY	NAICS INDUSTRY
Eley Holdings LLC	Existing Expansion*	Active	Riley	Office of Other Holding Companies
EnlightnU USA, LLC	Existing Expansion*	Active	Johnson	Insurance Agencies and Brokerage
EPC Real Estate Group, LLC	Relocation	Active	Johnson	Other Activities Related to Real Estate
Essense of Australia, Inc.	Existing Expansion	Active	Johnson	Women's, Children's, and Infants' Clothing and Accessories Merchant Wholesalers
Executive Flight Services, LLC	Relocation	Active	Johnson	Other Nonscheduled Air Transportation
Fabcon Precast, LLC	Existing Expansion	Active	Linn	Other Concrete Product Manufacturing
Fagron Compounding Services	Existing Expansion*	Active	Sedgwick	Pharmaceutical Preparation Manufacturing
Fairbanks Scales, Inc.	Relocation	Active	Johnson	Scale and Balance Manufacturing
Fairview Mills, LLC	Existing Expansion*	Active	Brown	Dog and Cat Food Manufacturing
Faith Technologies, Inc.	Existing Expansion	Active	Johnson	Electrical Contractors and Other Wiring Installation Contractors
Farmobile, LLC	Existing Expansion	Completed	Johnson	Data Processing, Hosting, and Related Services
Feed Yard Industrial Solutions, Inc.	New Location - Start Up*	Active	Finney	Rolling Mill and Other Metalworking Machinery Manufacturing
Ferroloy, Inc.	Existing Expansion	Active	Sedgwick	Iron Foundries
Figeac Aero North America, LLC	Relocation	Active	Sedgwick	Other Aircraft Parts and Auxiliary Equipment Manufacturing
Fire Door Solutions, LLC	Existing Expansion	Active	Johnson	All Other Nonresidential Specialty Trade Contractors
Flowers Baking Company of Lenexa, LLC	New Location-OOS Expansion	Active	Johnson	Commercial Bakeries
Foley Industries, Inc.	Existing Expansion	Active	Sedgwick	Commercial and Industrial Machinery and Equipment (except Automotive and Electronic) Repair and Maintenance
Genesis Corporation	New Location-OOS Expansion	Completed	Johnson	Computer Systems Design Services

2022 PEAK AGREEMENTS

COMPANY NAME	AGREEMENT TYPE	STATUS	COUNTY	NAICS INDUSTRY
GHS, Inc.	New Location-Start Up	Active	Rice	Administrative Management and General Management Consulting Services
Global Aviation Technologies LLC	Existing Expansion	Active	Sedgwick	Aircraft Manufacturing
Global Grain, LLC	New Location -Start Up	Active	Shawnee	Farm Product Warehousing and Storage
Government Employees Insurance Company	Relocation	Active	Johnson	Direct Property and Casualty Insurance Carriers
Grantham University	Relocation	Active	Johnson	Colleges, Universities and Professional Schools
Great Plains Manufacturing, Inc.	New Location-OOS Expansion*	Active	Saline	Farm Machinery and Equipment Manufacturing
Great West Kansas, LLC	New Location-Start Up	Active	Finney	Refrigerated Warehousing and Storage
Green Dot Bioplastics, Inc.	Existing Expansion*	Active	Pottawatomie	Custom Compounding of Purchased Resins
H.W. Lochner, Inc.	Relocation	Active	Johnson	Engineering Services
Harper Industries, Inc.	Existing Expansion	Active	Harper	Farm Machinery and Equipment Manufacturing
HCA Management Services, L.P.	Relocation	Active	Johnson	Office Administrative Services
Hi-Tech Weld Overlay Group, LLC	Relocation	Active	Johnson	Metal Coating, Engraving (except Jewelry and Silverware), and Allied Services to Manufacturers
Hodgdon Powder Company, Inc.	Existing Expansion*	Active	Dickinson	Explosives Manufacturing
Hostess Brands, LLC	Relocation	Active	Johnson	General Warehousing and Storage
Hostess Brands, LLC	Relocation	Active	Johnson	Corporate, Subsidiary, and Regional Managing Offices
ILLCA USA, LLC	Existing Expansion*	Active	Johnson	All Other Miscellaneous Fabricated Metal Product Manufacturing
Imagemakers, Inc.	Existing Expansion*	Active	Pottawatomie	Graphic Design Services
In2itive, LLC	New Location-Start Up	Active	Johnson	Other Accounting Services
Industrial Maintenance of Topeka, Inc.	Existing Expansion	Active	Shawnee	Conveyor and Conveying Equipment Manufacturing
Insight 2 Design, LLC	Existing Expansion	Active	Jonson	Industrial Design Services

2022 PEAK AGREEMENTS

COMPANY NAME	AGREEMENT TYPE	STATUS	COUNTY	NAICS INDUSTRY
Integris BioServices, LLC	New Location–Start Up	Active	Johnson	Testing Laboratories
Integrity Reinforcing Bar, Inc.	New Location-Start Up	Active	Atchison	Fabricated Structural Metal Manufacturing
Intervet Inc.	Existing Expansion	Active	Johnson	Biological Product (except Diagnostic) Manufacturing
Intouch Group, LLC	Existing Expansion	Active	Johnson	Marketing Consulting Services
IT Renew, Inc.	New Location –OOS Expansion	Active	Johnson	Computer Systems Design Services
Ja-Del, Inc.	Relocation	Active	Johnson	Corporate Subsidiary and Regional Managing Offices
Johns Manville	Existing Expansion	Active	McPherson	Mineral Wood Manufacturing
Kansas Protein Foods, LLC	New Location–Start Up	Active	Rice	Soybean and Other Oilseed Processing
Kendall Packaging Corporation	Existing Expansion	Active	Crawford	Plastics Packaging Film and Sheet (including Laminated) Manufacturing
KeyCentrix, LLC	Existing Expansion	Active	Sedgwick	Software Publishers
Kiewit Corporation	Existing Expansion	Active	Johnson	Industrial Building Construction
Kindred Biosciences, Inc.	New Location-OOS Expansion	Active	Doniphan	Pharmaceutical Preparation Manufacturing
King of Freight LLC	Existing Expansion	Terminated	Sedgwick	Freight Transportation Arrangement
KMT Waterjet Systems, Inc.	Relocation	Active	Cherokee	Fluid Power Pump and Motor Manufacturing
Kraft Tank Corporation	Relocation	Completed	Wyandotte	Metal Tank (Heavy Gauge) Manufacturing
LaborChart, Inc.	Existing Expansion*	Terminated	Johnson	Data Processing, Hosting and Related Services
Learjet, Inc.	Relocation	Completed	Sedgwick	Aerospace Product and Parts Manufacturing
Lineage Logistics Services, LLC	New Location-Start Up*	Active	Johnson	Refrigerated Warehousing and Storage
Livestock Marketing Association	Relocation	Active	Johnson	Business Association
Magic Kitchen, Inc.	Relocation	Active	Johnson	General Warehousing and Storage

2022 PEAK AGREEMENTS

COMPANY NAME	AGREEMENT TYPE	STATUS	COUNTY	NAICS INDUSTRY
Marathon Reprographics, Inc.	Relocation	Active	Wyandotte	Custom Computer Programming Services
Mars Wrigley Confectionery US LLC	New Location–Start Up	Completed	Shawnee	Chocolate and Confectionery Manufacturing from Cacao Beans
Massman Construction Company	Relocation	Active	Johnson	Corporate, Subsidiary, and Regional Managing Offices
Mazuma Credit Union	Relocation	Completed	Johnson	Credit Unions
McFarlane Aviation, Inc.	Existing Expansion*	Active	Douglas	Other Aircraft Parts and Auxiliary Equipment Manufacturing
McFarlane Aviation, Inc.	Existing Expansion	Completed	Douglas	Other Aircraft Parts and Auxiliary Equipment Manufacturing
Meadowlark Dairy Nutrition, LLC	New Location-OOS Expansion	Active	Finney	Dry, Condensed, and Evaporated Dairy Product Manufacturing
Members Mortgage Services, LLC	Existing Expansion	Active	Reno	Other Activities Related to Credit Intermediation
Menufy.com LLC	Existing Expansion*	Active	Johnson	Internet Publishing and Broadcasting and Web Search Portals
MGPI Processing, Inc.	Existing Expansion	Active	Atchison	Other Food Manufacturing
Mies & Son's Trucking, LLC	Existing Expansion*	Active	Finney	General Freight, Trucking, Long-Distance, Truckload
Missouri-Kansas Supply Company	Existing Expansion*	Active	Wyandotte	Plumbing and Heating Equipment and Supplies (Hydronics) Merchant Wholesalers
MMGY Global, LLC	Relocation	Active	Johnson	Advertising Agencies
Modern Manufacturing Inc.	New Location–OOS Expansion	Active	Douglas	All Other Miscellaneous Fabricated Metal Product Manufacturing
MSB Global Resources Corporation	Existing Expansion	Terminated	Sedgwick	Engineering Services
Multi-Service Technology Solutions	Existing Expansion	Active	Johnson	Financial Transactions Processing, Reserve and Clearinghouse Activities
Murphy-Hoffman Company	Existing Expansion	Active	Wyandotte	Corporate, Subsidiary, and Regional Managing Offices
MyFreightWorld Carrier Management	Existing Expansion	Active	Johnson	Process, Physical Distribution, and Logistics Consulting Services

2022 PEAK AGREEMENTS

COMPANY NAME	AGREEMENT TYPE	STATUS	COUNTY	NAICS INDUSTRY
Nations Holding Company	Existing Expansion*	Active	Johnson	Other Activities Related to Real Estate
NetPMD Solutions, LLC	New Location-Start Up*	Active	Johnson	Computer Systems Design Services
Netsmart Technologies, Inc.	Existing Expansion*	Active	Johnson	Custom Computer Programming Services
Netsmart Technologies, Inc.	Relocation	Active	Johnson	Custom Computer Programming Services
Neu Consulting Group, LLC	Existing Expansion*	Active	Johnson	Computer Systems Design Services
New Directions Behavioral Health, L.L.C.	Relocation	Active	Johnson	Other Individual and Family Services
NIC Solutions, LLC	Existing Expansion	Terminated	Johnson	Data Processing, Hosting, and Related Services
NICUSA, Inc.	Existing Expansion	Terminated	Johnson	Administrative Management and General Management Consulting Services
Nor-Am Ice and Cold LLC	New Location-OOS Expansion	Active	Doniphan	Refrigerated Warehousing and Storage
NOR-AM Logistics South, LLC	New Location-OOS Expansion	Active	Ford	Refrigerated Warehousing and Storage
NorthWind Technical Services, LLC	Existing Expansion	Active	Brown	Computer Systems Design Services
Novacoast, Inc.	New Location -OOS Expansion	Active	Sedgwick	Computer Systems Design Services
Nueterra Holdings Management, LLC	Existing Expansion	Active	Johnson	Office Administrative Services
Old Dominion Freight Line, Inc.	Existing Expansion*	Active	Wyandotte	General freight trucking Long-Distance, Less Than Truckload
OneRequest Team, LLC	Existing Expansion*	Active	Johnson	Internet Publishing and Broadcasting and Web Search Portals
OnspringTechnologies LLC	Existing Expansion	Active	Johnson	Custom Computer Programming Services
Orizon Aerostructures, LLC	New Location-OOS Expansion	Active	Neosho	Machine Shops
Orizon Aerostructures, LLC	Relocation	Active	Johnson	Other Aircraft Parts and Auxiliary Equipment Manufacturing
Packerware, LLC	Existing Expansion*	Active	Douglas	All Other Plastics Product Manufacturing
Palmer Manufacturing & Tank, Inc.	New Location - Start Up	Active	Finney	Metal tank (Heavy guage) Manufacturing

2022 PEAK AGREEMENTS

COMPANY NAME	AGREEMENT TYPE	STATUS	COUNTY	NAICS INDUSTRY
Paragon Precision Metal, LLC	New Location -Start Up	Active	McPherson	Metal Product Manufacturing
PBI-Gordon Companies, Inc.	Relocation	Active	Johnson	Corporate, Subsidiary, and Regional Managing Offices
Performance Contracting Group, Inc.	Existing Expansion	Completed	Johnson	Commercial and Institutional Building Construction
Pharmaceutical Research Associates, Inc.	Existing Expansion	Active	Johnson	Research and Development in the Physical
Pivot International, Inc.	Existing Expansion	Active	Johnson	Engineering Services
Plastics Extrusion Machinery, Inc.	Existing Expansion	Active	McPherson	Other Industrial Machinery Manufacturing
Plastikon Healthcare, LLC	Existing Expansion	Active	Douglas	All Other Plastics Product Manufacturing
Pollen, Inc.	Existing Expansion	Active	Johnson	Data Processing, Hosting, and Related Services
Pretzels, LLC	New Location -OOS Expansion	Active	Douglas	Other Snack Food Manufacturing
Quest Analytics, LLC	Relocation	Active	Johnson	Software Publishers
Realto, Inc.	New Location-Start Up*	Active	Johnson	Securities Brokerage
Redwood Trading, LLC	Relocation	Active	Johnson	Petroleum and Petroleum Products Merchant Wholesalers (except Bulk Stations and Terminals)
Reiloy USA Corporation	New Location -OOS Expansion	Active	Sedgwick	Other Industrial Machinery Manufacturing
Reser's Fine Foods, Inc.	Existing Expansion	Active	Shawnee	Perishable Prepared Food Manufacturing
Restaurant Services Group, Inc.	Existing Expansion*	Active	Johnson	Offices of Other Holding Companies
Retail Success, LLC	Existing Expansion	Active	Johnson	Custom Computer Programming Services
RTS Administrative Services, Inc.	Existing Expansion	Active	Johnson	Freight Transportation Arrangement
RTS Administrative Services, Inc.	Existing Expansion	Active	Johnson	Freight Transportation Arrangement
Russell Stover Chocolates, LLC	Relocation	Active	Dickinson	Confectionery Manufacturing from Purchased Chocolate
Russell Stover Chocolates, LLC	Relocation	Active	Allen	Confectionery Manufacturing from Purchased Chocolate

2022 PEAK AGREEMENTS

COMPANY NAME	AGREEMENT TYPE	STATUS	COUNTY	NAICS INDUSTRY
RX Savings, LLC	Existing Expansion	Active	Johnson	Software Publishers
S&W Waterproofing, Inc.	Relocation	Completed	Johnson	All Other Specialty Trade Contractors
Schenck Process, LLC	Existing Expansion*	Active	Brown	Conveyor and Conveying Equipment Manufacturing
Seaboard Energy Kansas, LLC	New Location –Start Up	Active	Stevens	Other Scientific and Technical Consulting Services
Seats, Inc.	New Location–OOS Expansion	Active	Johnson	Motor Vehicle Seating and Interior Trim Manufacturing
Security Benefit Corporation	Existing Expansion	Completed	Shawnee	Offices of Other Holding Companies
Security Benefit Corporation	New Location –Start Up	Active	Johnson	Offices of Other Holding Companies
Seismic Digital, LLC	Existing Expansion*	Active	Johnson	Advertising Agencies
SelectQuote Insurance Services	Existing Expansion	Active	Johnson	Insurance Agencies and Brokerages
Simmons Pet Food, Inc.	Existing Expansion	Active	Lyon	Dog and Cat Food Manufacturing
Simmons Pet Food, Inc.	Relocation	Active	Lyon	Dog and Cat Food Manufacturing
Simmons Pet Food, Inc.	Existing Expansion	Active	Lyon	Dog and Cat Food Manufacturing
Sims Global Solutions, LLC	Existing Expansion	Active	Johnson	Freight Transportation Arrangement
Sizewise Rentals, LLC	Relocation	Completed	Johnson	Corporate, Subsidiary, and Regional Managing Offices
SnapIT Solutions, LLC	Existing Expansion	Active	Johnson	Computer Systems Design Services
Sorella Group, Inc.	Existing Expansion	Active	Wyandotte	Finish Carpentry Contractors
Spectrum Brands, Inc.	Relocation	Active	Johnson	Plumbing and Heating Equipment and Supplies (Hydronics) Merchant Wholesalers
Spirit AeroSystems, Inc.	New Location–OOS Expansion	Active	Sedgwick	Aircraft Manufacturing
Spirit AeroSystems, Inc.	Existing Expansion	Active	Sedgwick	Aircraft Manufacturing
Stackify, LLC	Relocation	Active	Johnson	Software Publishers

2022 PEAK AGREEMENTS

COMPANY NAME	AGREEMENT TYPE	STATUS	COUNTY	NAICS INDUSTRY
Standard Motor Products, Inc.	Relocation	Active	Montgomery	Motor Vehicle Electrical and Electronic Equipment Manufacturing
Sun Valley , Inc.	Existing Expansion	Active	Reno	General Freight Trucking, Long-Distance, Truckload
Superior Holding, Inc.	Relocation*	Active	Reno	Power Boiler and Heat Exchanger Manufacturing
TAMKO Building Products, LLC	Relocation	Active	Cherokee	Asphalt Shingle and Coating Materials Manufacturing
Terracon Consultants, Inc.	Existing Expansion	Active	Johnson	Engineering Services
Teva Pharmaceuticals USA, Inc.	Relocation	Completed	Johnson	Business to Business Electronic Markets
The Lower Agency Inc.	Relocation	Active	Johnson	Human Resources Consulting Services
The Redwood Group, LLC	Existing Expansion	Active	Johnson	Petroleum and Petroleum Products Merchant Wholesalers (except Bulk Stations and Terminals)
THM, LLC	New Location-Start Up*	Active	Shawnee	Dog and Cat Food Manufacturing
Tickets for Less, LLC	Existing Expansion*	Active	Johnson	All Other Travel Arrangement and Reservation Services
Topeka Health Systems LLC	New Location –OOS Expansion	Active	Shawnee	General Medical and Surgical Hospitals
Torch Research, LLC	Existing Expansion*	Active	Johnson	All Other Professional, Scientific and Technical Services
TTEC Services Corporation	New Location-OOS Expansion*	Active	Johnson	Telemarketing Bureaus and Other Contact Centers
Union Tank Car Company	Existing Expansion	Active	Butler	Support Activities for Rail Transportation
UnitedLex Corporation	Existing Expansion*	Active	Johnson	All Other Professional, Scientific and Technical Services
University of Kansas Hospital Authority	New Location –Start Up	Active	Wyandotte	General Medical and Surgical Hospitals
UPG Solutions, LLC	Relocation	Active	Johnson	Custom Computer Programming Services
URBN US Retail LLC	New Location –OOS Expansion	Active	Wyandotte	General Warehousing and Storage

2022 PEAK AGREEMENTS

COMPANY NAME	AGREEMENT TYPE	STATUS	COUNTY	NAICS INDUSTRY
US Assets Recovery, LLC	Existing Expansion*	Active	Cherokee	Secondary Smelting, Refining and Alloying of Nonferrous Metal (except Copper and Aluminum)
Viega LLC	Relocation	Active	McPherson	Fabricated Pipe and Pipe Fitting Manufacturing
Virtus, LLC	Existing Expansion	Completed	Johnson	Insurance Agencies and Brokerages
WellSky Corporation	Existing Expansion	Active	Johnson	Custom Computer Programming Services
WellSky Corporation	Existing Expansion*	Active	Johnson	Custom Computer Programming Services
WellSky Financial Services, LLC	Relocation	Active	Johnson	Other Accounting Services
Wenger Manufacturing, Inc.	Existing Expansion	Active	Nemaha	Food Product Machinery Manufacturing
Westpro Construction Solutions, Inc	Relocation	Active	Wyandotte	Commercial and Institutional Building Construction
WireCo World Group, Inc.	Relocation	Active	Johnson	Corporate, Subsidiary, and Regional Managing Offices
World Fuel Services, Inc.	Relocation	Completed	Wyandotte	Petroleum and Petroleum Products Merchant Wholesalers (except Bulk Stations and Terminals)



1000 SW Jackson St., Suite 100
 Topeka, Kansas 66612-1354
 785.296.3481 | kansascommerce.gov